

Save on DNA Ladders

From New England Biolabs

Buy 3 get 3 FREE*

Until Sept. 30th, 2024

Order in 3 easy steps:

1 Select a DNA Ladder



2 Order 6 of the same size



same size X 6

3 Buy 3 Get 3 FREE*

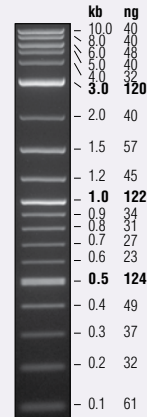


Save 50%

Eligible products

NEB#	Product	Size	List Price Each	Sale Price 6x Each
N0550S	Quick-Load® Purple 1 kb Plus DNA Ladder	1.25 ml	\$116	\$348
N0550L	Quick-Load® Purple 1 kb Plus DNA Ladder	3.75 ml	\$293	\$879
N0551S	Quick-Load® Purple 100 bp DNA Ladder	1.25 ml	\$137	\$411
N0551L	Quick-Load® Purple 100 bp DNA Ladder	3.75 ml	\$336	\$1,008
N0552S	Quick-Load® Purple 1 kb DNA Ladder	1.25 ml	\$101	\$303
N0552L	Quick-Load® Purple 1 kb DNA Ladder	3.75 ml	\$206	\$618
N0467S	Quick-Load® 100 bp DNA Ladder	1.25 ml	\$142	\$426
N0467L	Quick-Load® 100 bp DNA Ladder	3.75 ml	\$346	\$1,038
N0468S	Quick-Load® 1 kb DNA Ladder	1.25 ml	\$107	\$321
N0468L	Quick-Load® 1 kb DNA Ladder	3.75 ml	\$237	\$711
N0469S	Quick-Load® 1 kb Plus DNA Ladder	1.25 ml	\$124	\$372
N3200S	1 kb Plus DNA Ladder	1.25 ml	\$94	\$282
N3200L	1 kb Plus DNA Ladder	3.75 ml	\$365	\$1,095
N3231S	100 bp DNA Ladder	1.25 ml	\$94	\$282
N3231L	100 bp DNA Ladder	3.75 ml	\$364	\$1,092
N3232S	1 kb DNA Ladder	1.25 ml	\$86	\$258
N3232L	1 kb DNA Ladder	3.75 ml	\$338	\$1,014

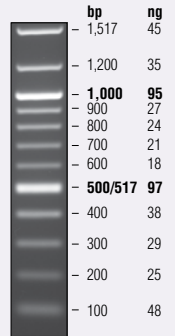
Order today! Visit: www.neb.ca/dna-ladders-b3g3f-24



1 kb Plus DNA Ladder
1.0% TBE agarose gel.
Mass values are for 1 µg/lane.



1 kb DNA Ladder
0.8% TAE agarose gel.
Mass values are for 0.5 µg/lane.



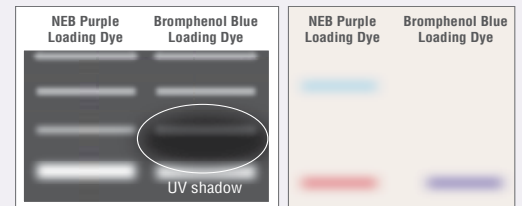
100 bp DNA Ladder
1.3% TAE agarose gel.
Mass values are for 0.5 µg/lane.

Available in 3 convenient formats:

- Standard format
- Ready-to-use, pre-diluted formats:
 - **Quick-Load®**: containing Bromophenol Blue
 - **Quick-Load® Purple**: containing purple loading dye

Included with NEB DNA Markers & Ladders: Gel Loading Dye, Purple (6X)

- Brighter, sharper bands vs. conventional loading buffers
- No UV shadow allows for publication-grade images
- Stops enzyme reactions



Gel Loading Dye, Purple (6X), no SDS, is included in most DNA ladders and markers. This unique loading buffer does not cast a UV shadow over the underlying bands, unlike conventional Bromophenol Blue containing loading buffers.



READY-TO-LOAD DNA LADDERS ARE STABLE AT ROOM TEMP. FOR 6 MONTHS



Find Selection Charts for NEB's DNA markers and ladders

Visit: bit.ly/3Vw3MTE

Howard Cukier, Ph.D.
Regional Manager,
Ontario and Manitoba
Cell: (416) 527-2352
cukier@neb.com

Alexandre Rochette, Ph.D.
Territory manager, Eastern Canada
Cell: (514) 233-4557
rochette@neb.com

Julie Wong, Ph.D.
Territory Manager, Western Canada
Cell: (604) 767-5078
jwong@neb.com

Nicholas Prevedel, MSc.
Associate Field Sales Representative,
Ontario and Manitoba
Cell: (437) 431-8820
nprevedel@neb.com

Martin Chenal, Ph.D.
Associate Field Sales Representative,
Eastern Canada
Cell: (438) 466-2884
mchenal@neb.com



50 YEARS